

W:Hall

FICHE TECHNIQUE
TECHNISCHE FICHE
TECHNICAL SHEET

AUDITORIUM

<https://www.locationwhall.com/auditorium>

Contact

Technical Director : Maxime Munson – mmunson@whall.be - +32 2 435 59 88

Stage Manager (Light) : Rudy Vantighem – rvantighem@whall.be - +32 2 435 59 85

Stage Manager (Light) : Nicolas Moulart – nmoulart@whall.be - +32 2 435 59 86

Stage Manager (Sound) : Jan Philips – jphilips@whall.be - +32 2 435 59 87

Stage Assistant : Besnik Bashota - bbashota@whall.be - +32 2 435 59 84

Room & Hosting manager : Miguel Caro – mcaro@whall.be - +32 2 435 59 82

Sound

Sound System

- Line Array D&B + Front Field Stage & Balcony
- 10x D&B MAX 15"
- Desk Yamaha LS9-32 & QL1
- Multi stage 24/12

Micros

- 6x Audix ADX-51
- 2x Audix OM5
- 4x Audix ADX-60
- 2x Audiotechnica AT8538 (PRO35)
- 2x AKG C414 XL II
- 1x Beryerdynamic MCE80TG
- 5x Sennheiser MD441-U
- 2x Sennheiser MKH 415-T
- 1x Sennheiser MD421 II
- 1x Sennheiser MS14P
- 2x Sennheiser 815 T-U
- 2x Sennheiser E904
- 4x Sennheiser E906
- 8x Shure SM57
- 5x Shure SM58
- 1x Shure Beta 52A
- 4x Shure Beta 57A
- 4x Shure Beta 58A
- 1x Shure 87
- 6x Shure Microflex (capsule 185 cardioïde)
- 4x Shure Beta 58A HF (QLXD2 H51)
- 8x Emetteur Shure QLXD1 H51
- 4x DPA Skin Colour (4066)
- 2x DPA Black (4060)
- 4x DPA Skin Colour FIO66F00-2

Micros – Drum

- 1x Audix i5
- 2x Audix D2
- 1x Audix D4
- 1x Audix D6

DI BOX

- 5x DI BSS
- 3x DI JDI Stereo
- 6x DI JDI Passif

Player

- 1x Double CD Player
- 1x MD & DA Player
- 1x PC

Backline

- 1 x Piano Steinway 3/4 model C

Podium / Riser

- 24x 2m x 1m
- 10x 2m x 0,5m
- 5x 1m x 1m

Podium height

- 40x 20cm
- 40x 40cm
- 68x 60cm
- 60x 80cm
- 20x 100cm

Video

Video Projector

- 1x Barco DP2K – 20C – 20 000 Lumen

Diffusion

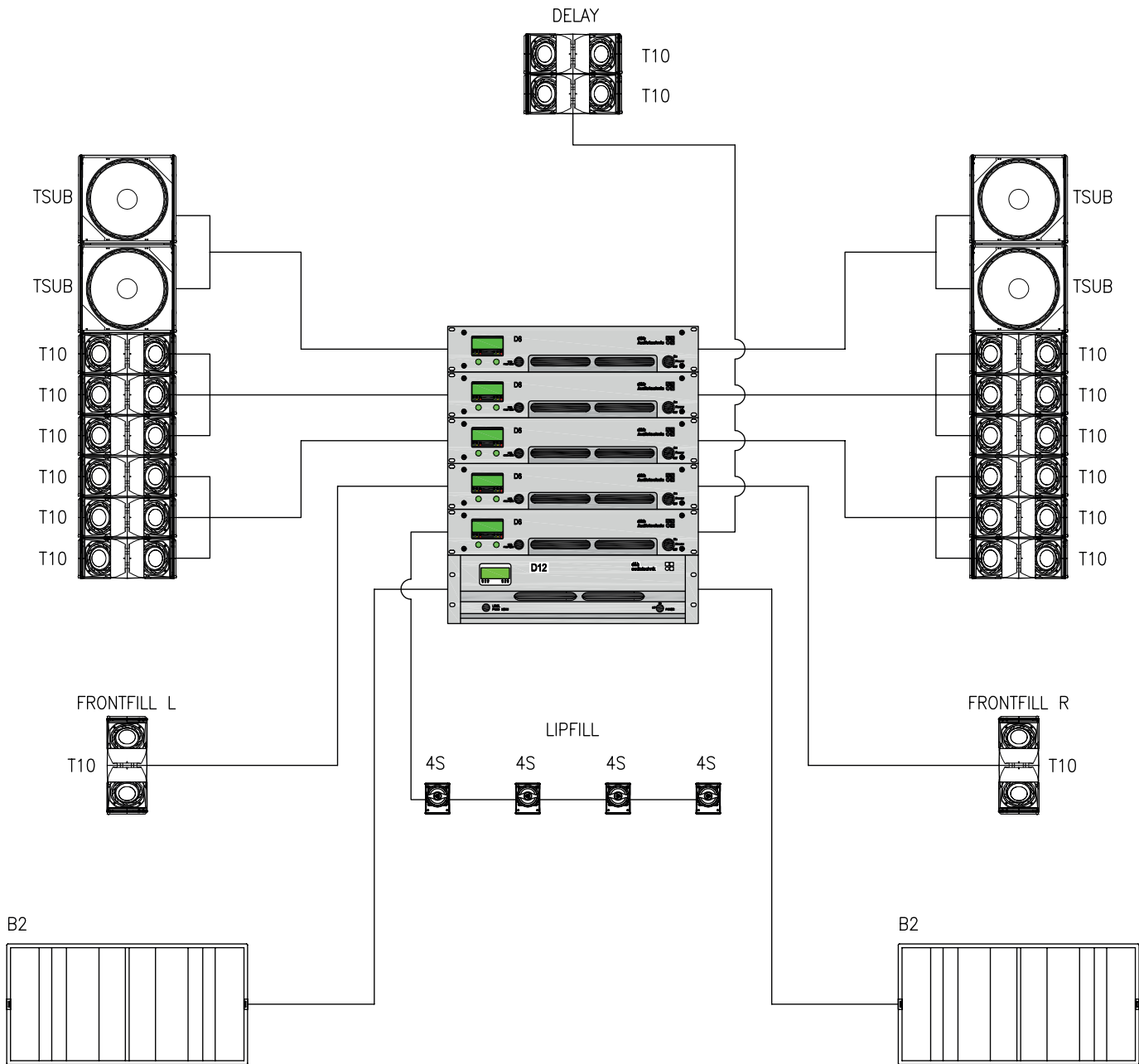
- 1x Barco Image Pro Série 2

Screen

- 1x Polichinelle Screen 8m x 8.5m
- 1x Cyclorama 8m x 8m

Player

- 1x DCP
- 1x DVD / Blue Ray Palyer
- 1x PC



AMPTEC professional sound solutions DUIFHUISWEG 11 TEL: +32.11.28.14.58 3590 DIEPENBEEK FAX: +32.11.28.14.59 BELGIUM SALES@AMPTEC.BE	CUSTOMER: Sint Pieterswoluwe	REVISION: A1
	PROJECT:	DATE: 4/02/2013
	K:\SINT PIETERSWOLUWE\20120370 geluidsmaterieel\Technisch\Kablage	DESIGN:
	TITLE: PA Ontwerp	DRAWN: FGL
	DRAWING NAME: PA Ontwerp_A1.dwg	INIT. DATE:
		SCALE:
	PAGE:	SIZE: A

Light

Desk

- 1x GrandMA 3 Compact XT (Soft 2)

Front of House

3.90m from stage

- 10x ETC Source4 Tungsten HD LED
- 5x Robert Juliat 714 SX

12.50m from stage

- 4x ETC Source4 Tungsten HD LED

Moving light

- 7x Clay Paky Alpha Spot 300 HPE
- 4x Clay Paky Alpha Spot 575
- 11x Ayrton Wildsun 500 Wash
- 10x Chauvet COLORdash Batten-Quad 12

Fixture

- 14x Sunstrip T10 (including 4 active)
- 15x projectors PC 2KW (Spotlight Milano)
- 14x projectors PC 1KW (RJ Lutin)
- 9x projectors PC 1KW (ADB)
- 11x Robert Juliat 1 KW 613 SX
- 11x Robert Juliat 1 KW 614 SX
- 11x Robert Juliat 2 KW 714 SX
- 80x Pars 64 (CP 60-61-62)
- 2x sets of ACL
- 6x Blacklights 400w
- 16x Quartz 1 KW (Horiziodes,Cycliode)

Fellowspot

- 1x Robert Juliat Victor 1800W HMI

Lateral Tower

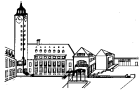
- 10x Lateral Tower

Smoke Machine

- 1x MDG ATMe + Martin AF1

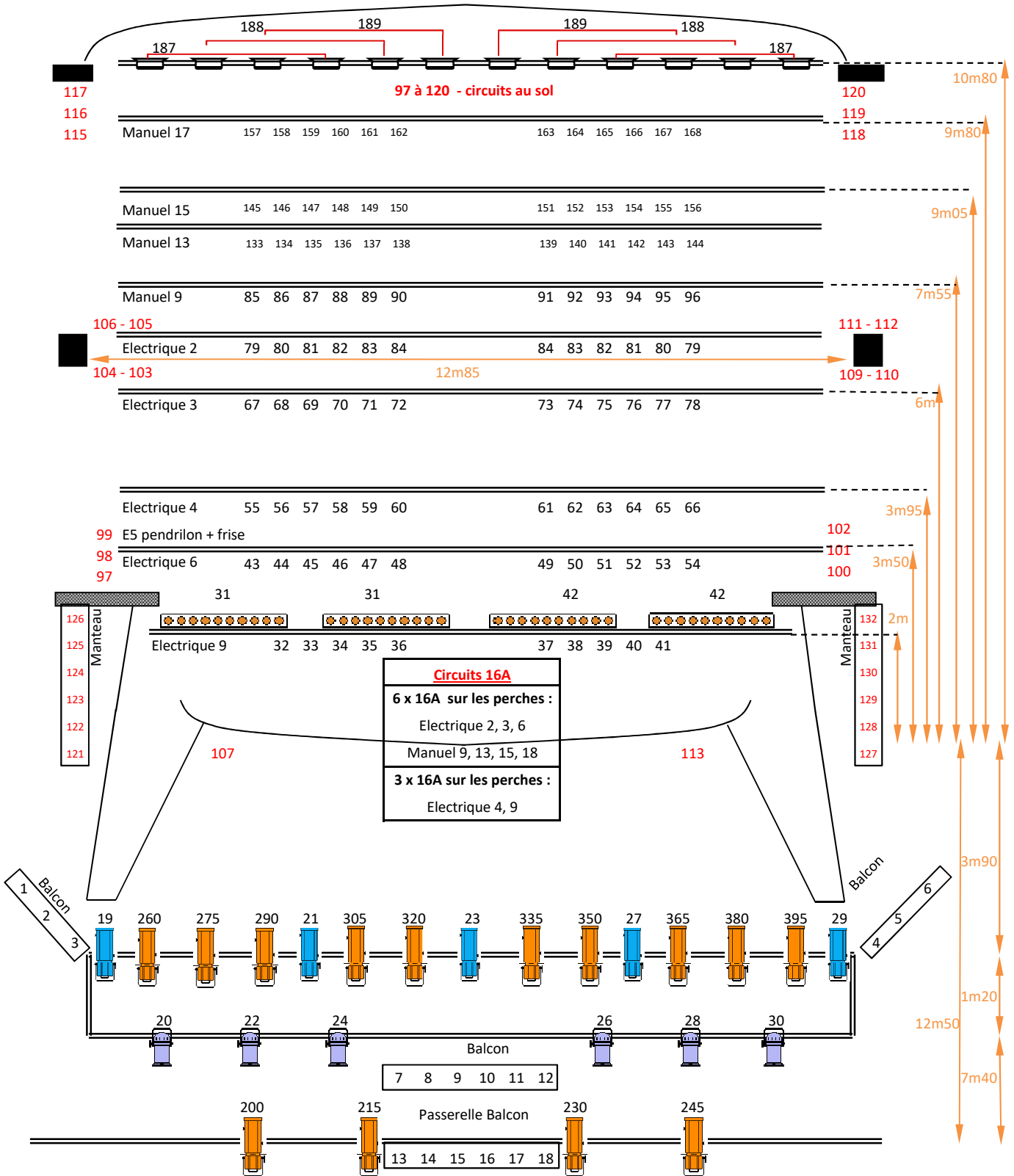
Power

- 174x Robert Juliat 3KW dimmers
- 1x 32A CEE/TRI
- 1x 63A CEE/TRI
- 1x 125A CEE/TRI

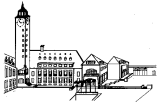


Plan de l'auditorium - Grill

W:Hall

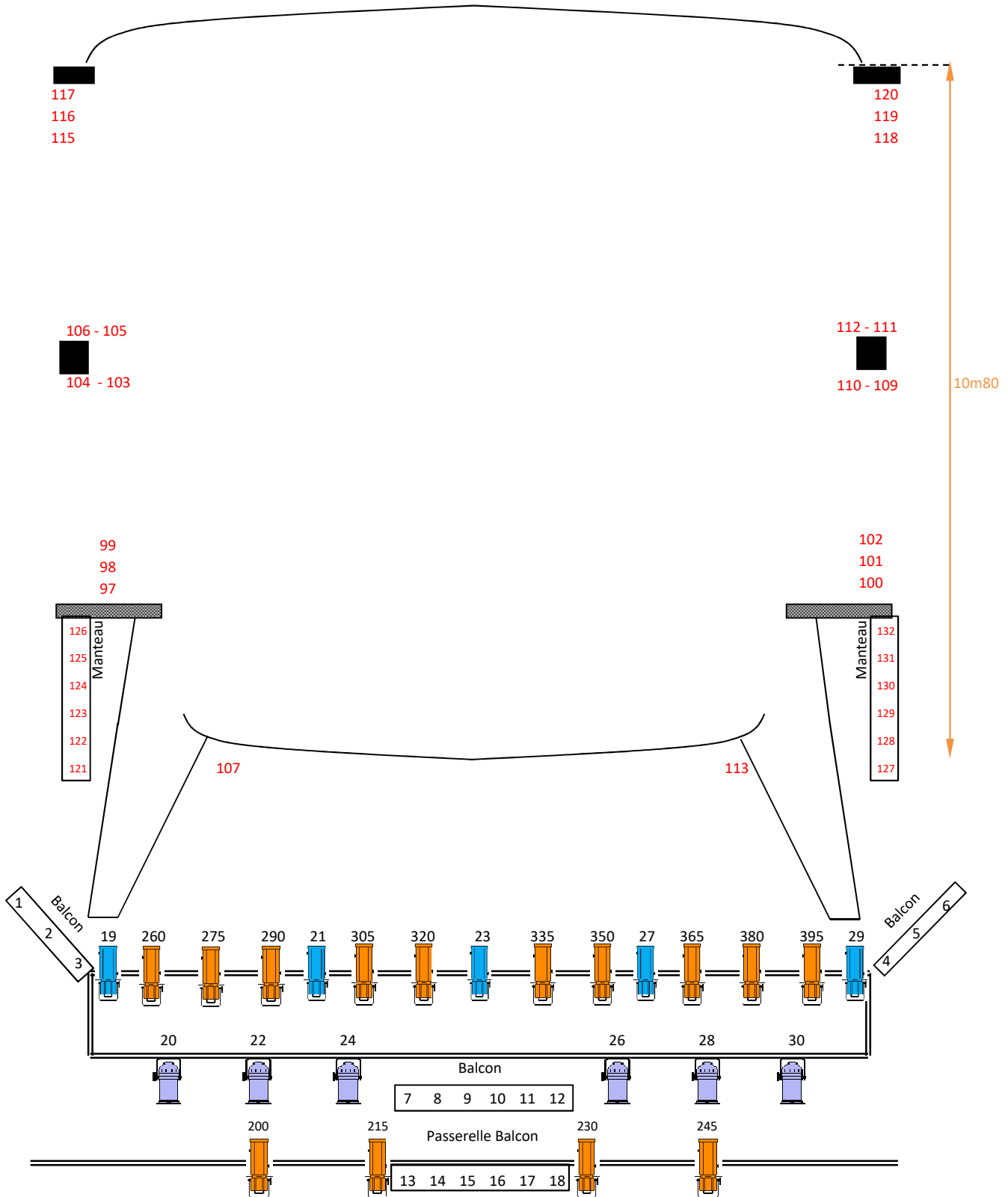


PC 1 KW	22x RJ 1KW (11x 613 & 614 SX)	4x Sunstrip Passif Blinder & Éclairage de salle	10x Chauvet COLORdash Batten Quad 12 L1/DMX 1 > 433 Mode 48CH	11x AYRTON WILD SUN 500 L2/DMX 243 > 273 Mode Standard	7x Clay Paky Alpha 300 HPE L2/DMX 81 > 219 Mode Standard
PC 2 Kw	11x R Juliat 2KW 714SX		ETC SOURCE FOUR Tungsten HD LED L1/DMX 200 > 395 Mode HSIC +7	PAR 64 CP 60 - 61 - 62	4x Clay Paky Alpha Spot 575 L2/DMX 1 > 61 Mode EXT.
Cycliodes L1 / DMX 187 > 189	CP 62 Éclairage de salle				



Plan de l'auditorium - Sol

W:Hall



Perche électrique

E.1 Patience lointain + frise

E.2

E.3

E.4

E.5 Pendrillons & frise

E.6

Écran

E.7 Frise

E.8 Lambrequin

E.9

Perche contre balancé :

(Longueur 10m)

Espacement de 30cm

M1

M2

M3 Frise

M4 Pendrillons

M5

Espacement de 25cm

M6 Frise

M7 Patience mi-plateau + frise

M8

M9

M10

M11 Frise

M12 Pendrillons

M13

M14

M15

M16 M17

M18

M19 Frise

M20 Pendrillons

M21 horiziodes

Pendrillon

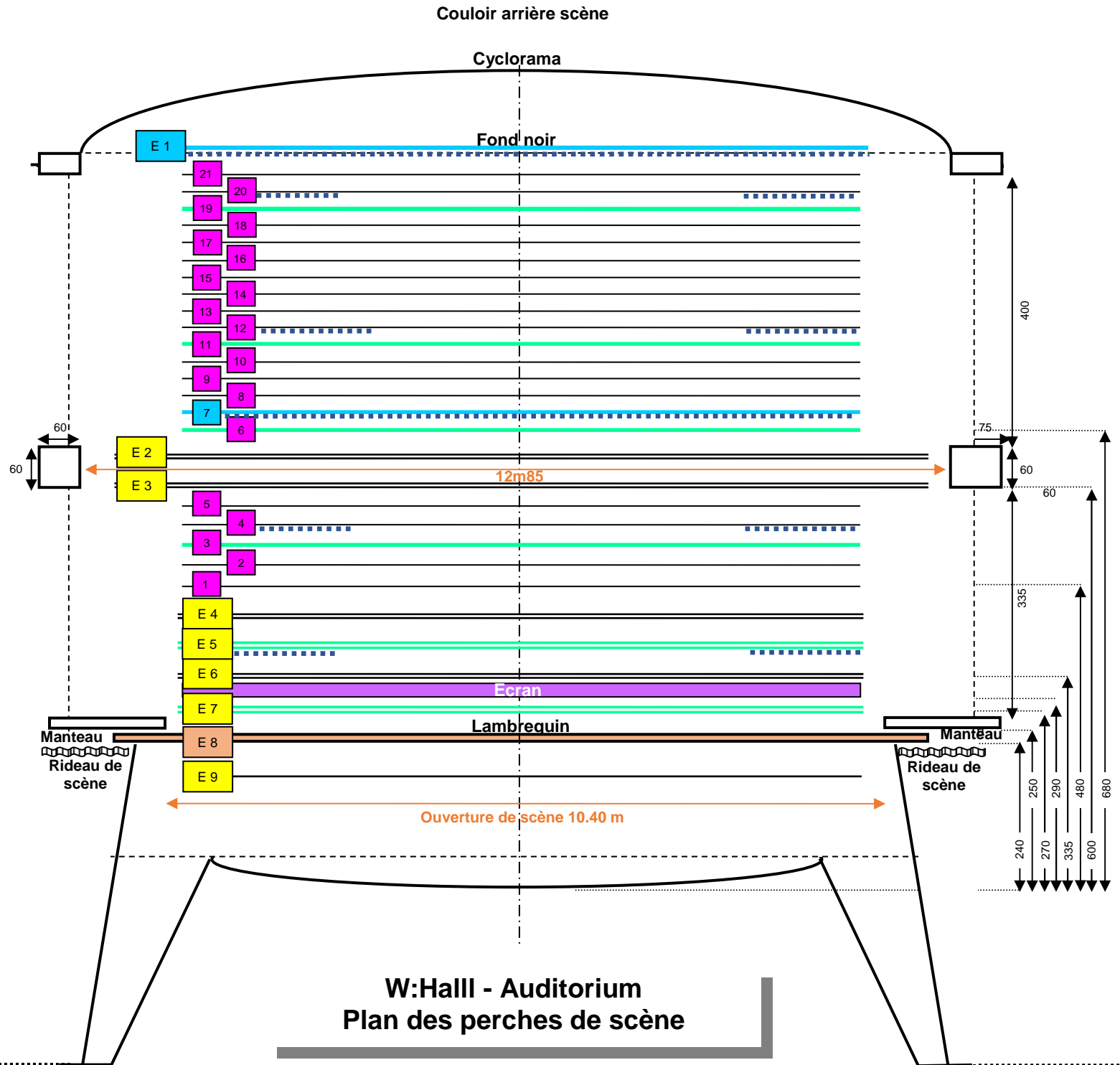
Largeur : 1.80 m

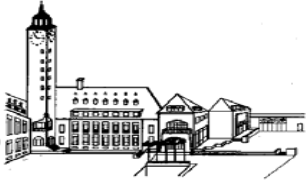
Hauteur : 8.00 m

Ouverture de pendrillon : 10.00 m

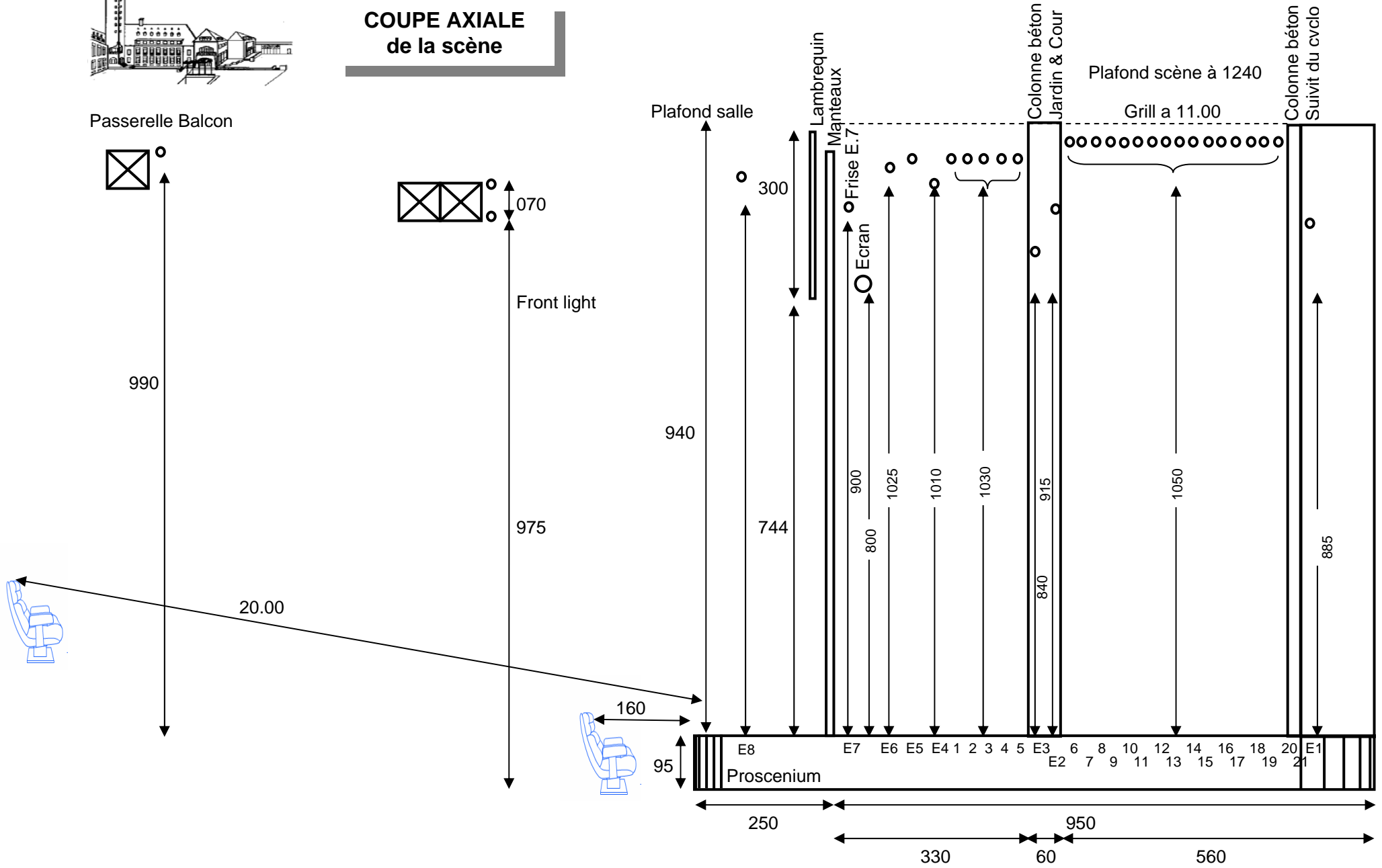
Frise

Hauteur : 2.40 m

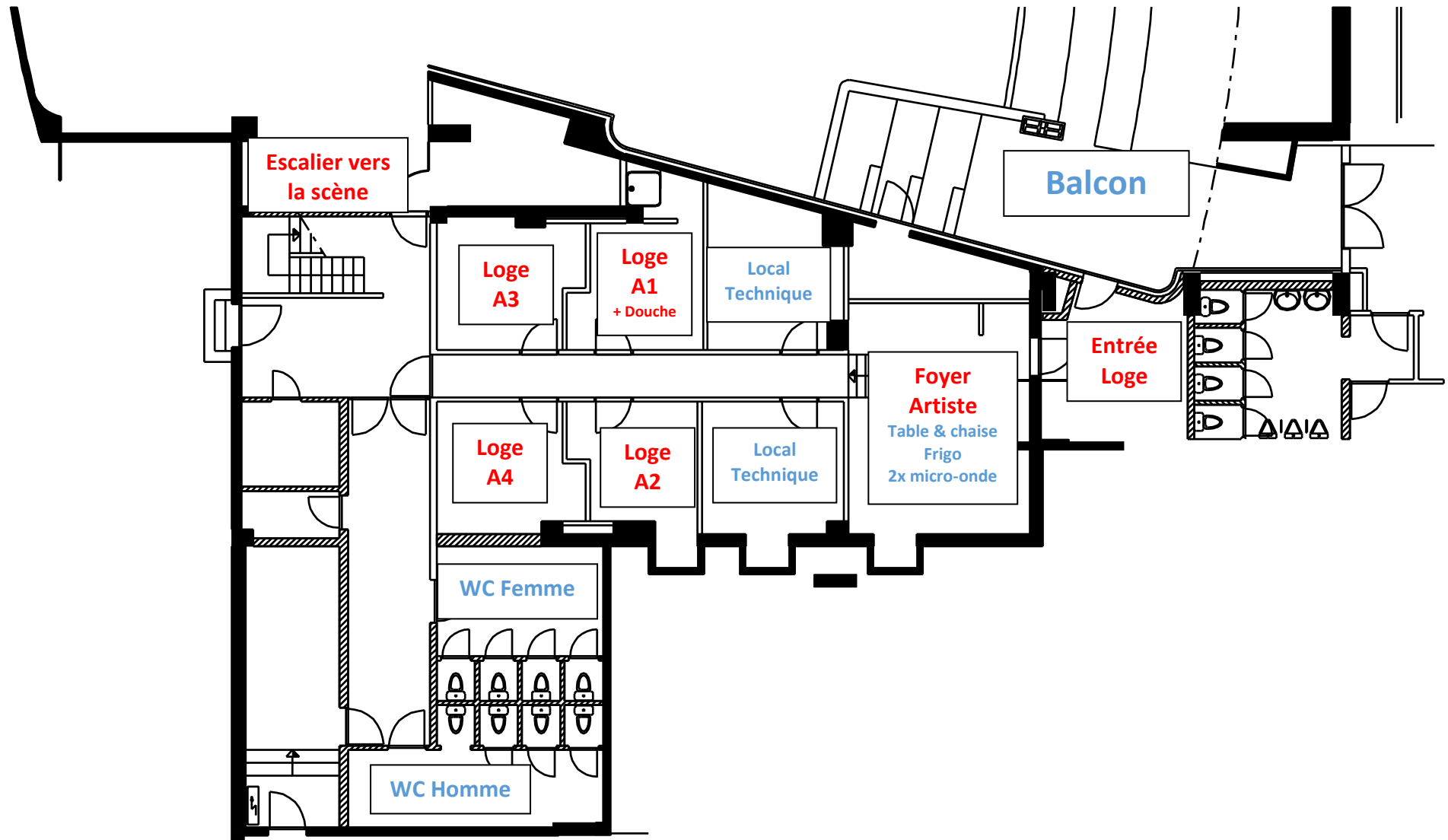




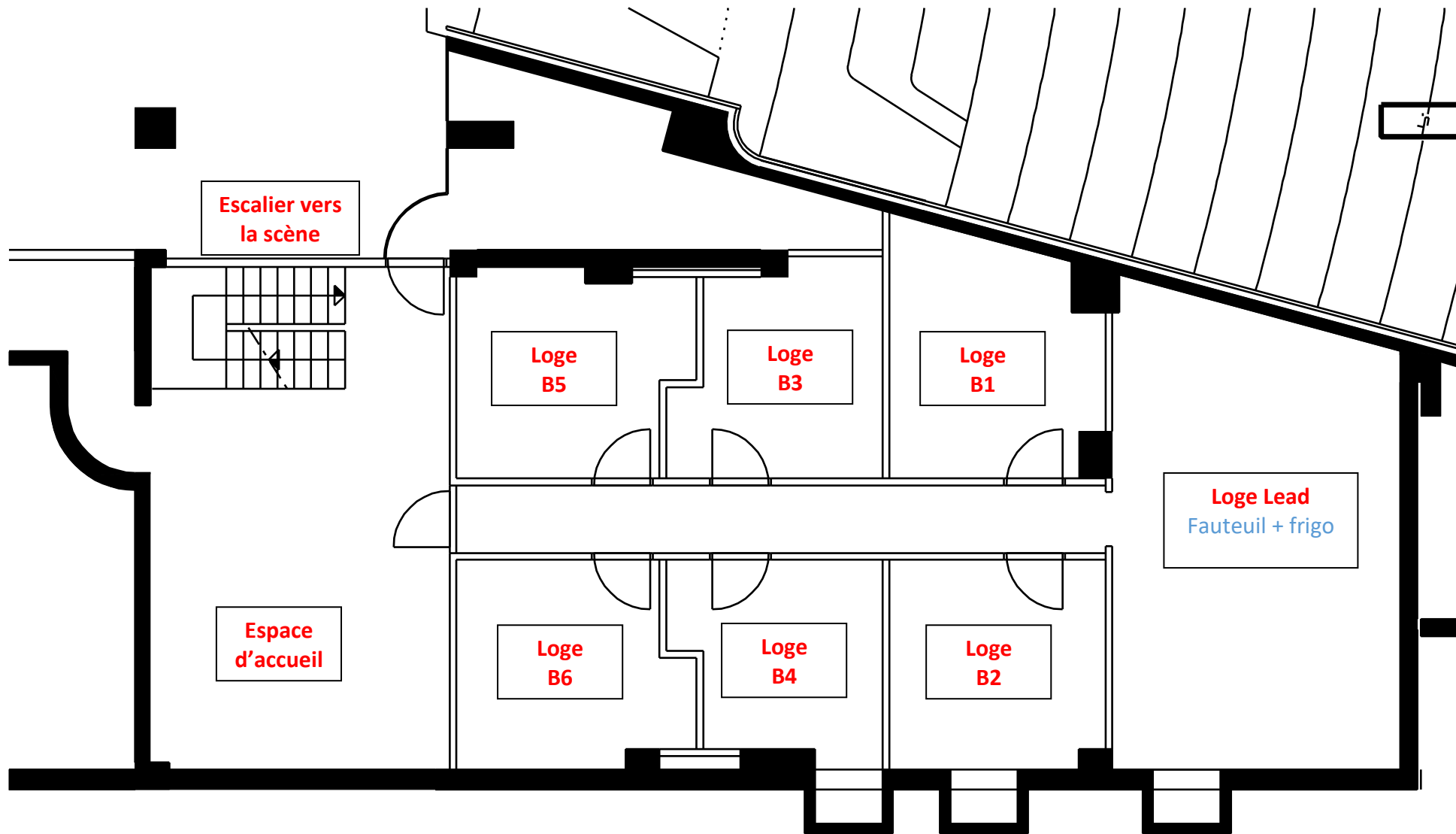
COUPE AXIALE de la scène



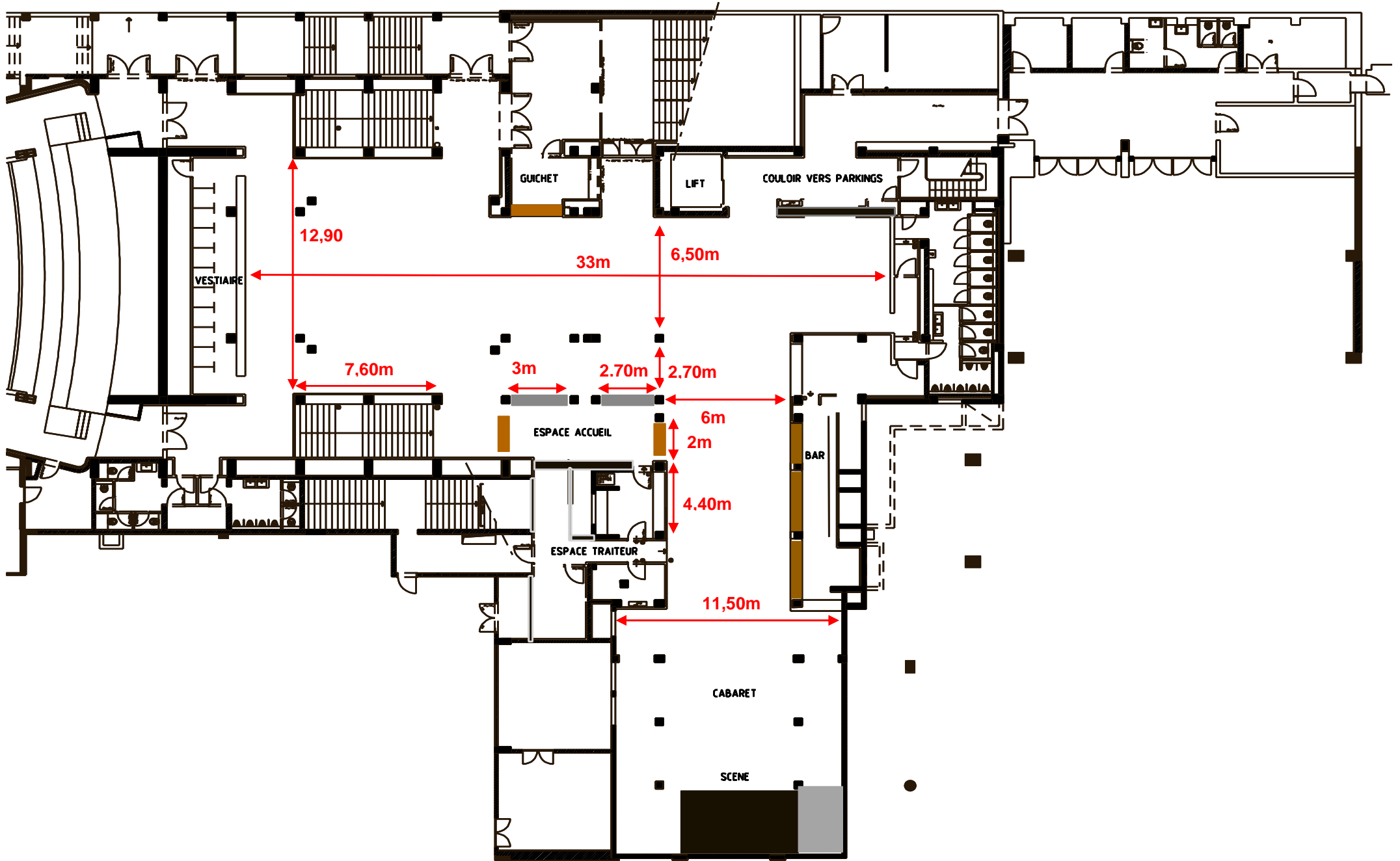
LOGE Auditorium - Niveau -1

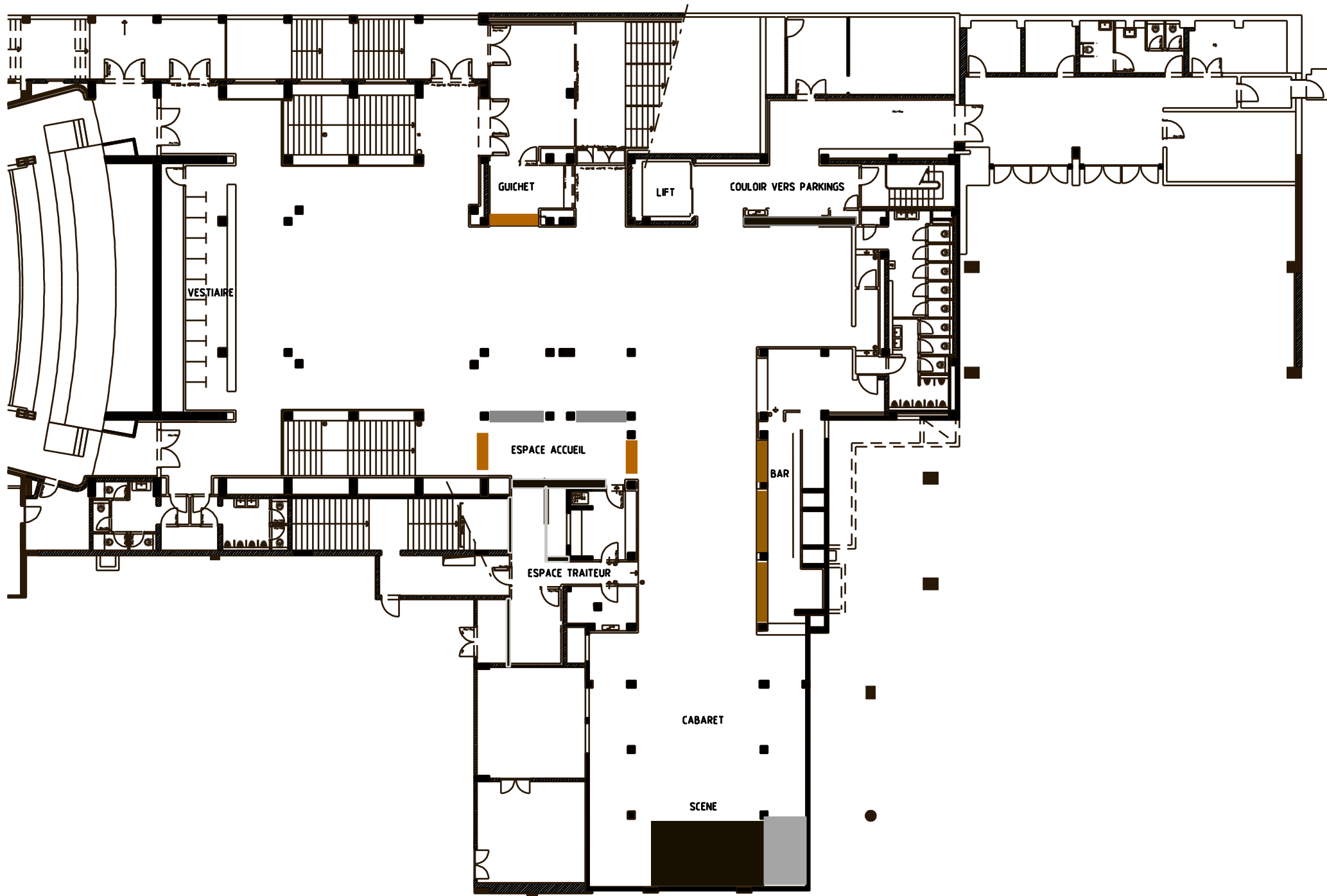


LOGE Auditorium - Niveau -2



PLAN DU FOYER DE L'AUDITORIUM





Auditorium - Numérotations des places (662 places)

LL18	LL16	LL14	LL12	LL10	LL8	LL6	LL4	LL2	LL1	LL3	LL5	LL7	LL9	LL11	LL13	LL15	LL17			
HH22	HH20	HH18	HH16	HH14	HH12	HH10	HH8	HH6	HH4	HH2	HH1	HH3	HH5	HH7	HH9	HH11	HH13	HH15	HH17	
GG22	GG20	GG18	GG16	GG14	GG12	GG10	GG8	GG6	GG4	GG2	GG1	GG3	GG5	GG7	GG9	GG11	GG13	GG15	GG17	GG19
FF22	FF20	FF18	FF16	FF14	FF12	FF10	FF8	FF6	FF4	FF2	FF1	FF3	FF5	FF7	FF9	FF11	FF13	FF15	FF17	
EE24	EE22	EE20	EE18	EE16	EE14	EE12	EE10	EE8	EE6	EE4	EE2	EE1	EE3	EE5	EE7	EE9	EE11	EE13	EE15	EE17
DD22	DD20	DD18	DD16	DD14	DD12	DD10	DD8	DD6	DD4	DD2	DD1	DD3	DD5	DD7	DD9	DD11	DD13	DD15	DD17	
CC18	CC16	CC14	CC12	CC10	CC8	CC6	CC4	CC2	CC1	CC3	CC5	CC7	CC9	CC11	CC13	CC15	CC17			
BB16	BB14	BB12	BB10	BB8	BB6	BB4	BB2	BB1	BB3	BB5	BB7	BB9	BB11	BB13	BB15	BB17				
AA20	AA18	AA16	AA14	AA12	AA10	AA8	AA6	AA4	AA2	AA1	AA3	AA5	AA7	AA9	AA11	AA13	AA15	AA17	AA19	

LL19	LL21	LL23	LL25
HH19	HH21	HH23	HH25
GG21	GG23	GG25	
FF19	FF21	FF23	
EE19	EE21	EE23	
DD19	DD21	DD23	

BALCON (196 places)

♿	♿	♿
---	---	---

♿	♿	♿
---	---	---

V22	V20	V18	V16	V14	V12	V10	V8	V6	V4	V2	V1	V3	V5	V7	V9	V11	V13	V15	V17	V19	V21	V23			
U26	U24	U22	U20	U18	U16	U14	U12	U10	U8	U6	U4	U2	U1	U3	U5	U7	U9	U11	U13	U15	U17	U19	U21	U23	U25
T24	T22	T20	T18	T16	T14	T12	T10	T8	T6	T4	T2	T1	T3	T5	T7	T9	T11	T13	T15	T17	T19	T21	T23		
S24	S22	S20	S18	S16	S14	S12	S10	S8	S6	S4	S2	S1	S3	S5	S7	S9	S11	S13	S15	S17	S19	S21	S23		
R22	R20	R18	R16	R14	R12	R10	R8	R6	R4	R2	R1	R3	R5	R7	R9	R11	R13	R15	R17	R19	R21				
P22	P20	P18	P16	P14	P12	P10	P8	P6	P4	P2	P1	P3	P5	P7	P9	P11	P13	P15	P17	P19	P21				
O20	O18	O16	O14	O12	O10	O8	O6	O4	O2	O1	O3	O5	O7	O9	O11	O13	O15	O17	O19	O21					
N20	N18	N16	N14	N12	N10	N8	N6	N4	N2	N1	N3	N5	N7	N9	N11	N13	N15	N17	N19						
M18	M16	M14	M12	M10	M8	M6	M4	M2	M1	M3	M5	M7	M9	M11	M13	M15	M17	M19							
L22	L20	L18	L16	L14	L12	L10	L8	L6	L4	L2	L1	L3	L5	L7	L9	L11	L13	L15	L17	L19	L21				
K20	K18	K16	K14	K12	K10	K8	K6	K4	K2	K1	K3	K5	K7	K9	K11	K13	K15	K17	K19	K21					
J20	J18	J16	J14	J12	J10	J8	J6	J4	J2	J1	J3	J5	J7	J9	J11	J13	J15	J17	J19						
H18	H16	H14	H12	H10	H8	H6	H4	H2	H1	H3	H5	H7	H9	H11	H13	H15	H17	H19							
G20	G18	G16	G14	G12	G10	G8	G6	G4	G2	G1	G3	G5	G7	G9	G11	G13	G15	G17	G19						
F18	F16	F14	F12	F10	F8	F6	F4	F2	F1	F3	F5	F7	F9	F11	F13	F15	F17	F19							
E18	E16	E14	E12	E10	E8	E6	E4	E2	E1	E3	E5	E7	E9	E11	E13	E15	E17								
D16	D14	D12	D10	D8	D6	D4	D2	D1	D3	D5	D7	D9	D11	D13	D15	D17									
C16	C14	C12	C10	C8	C6	C4	C2	C1	C3	C5	C7	C9	C11	C13	C15										
B14	B12	B10	B8	B6	B4	B2	B1	B3	B5	B7	B9	B11	B13	B15											
A14	A12	A10	A8	A6	A4	A2	A1	A3	A5	A7	A9	A11	A13												

S25	S27	
R23	R25	R27
P23	P25	P27
O23	O25	O27
N21	N22	N25
M21	M23	M25
L23	L25	L27
K23	K25	K27
J21	J23	J25
H21	H23	H25
G21	G23	G25

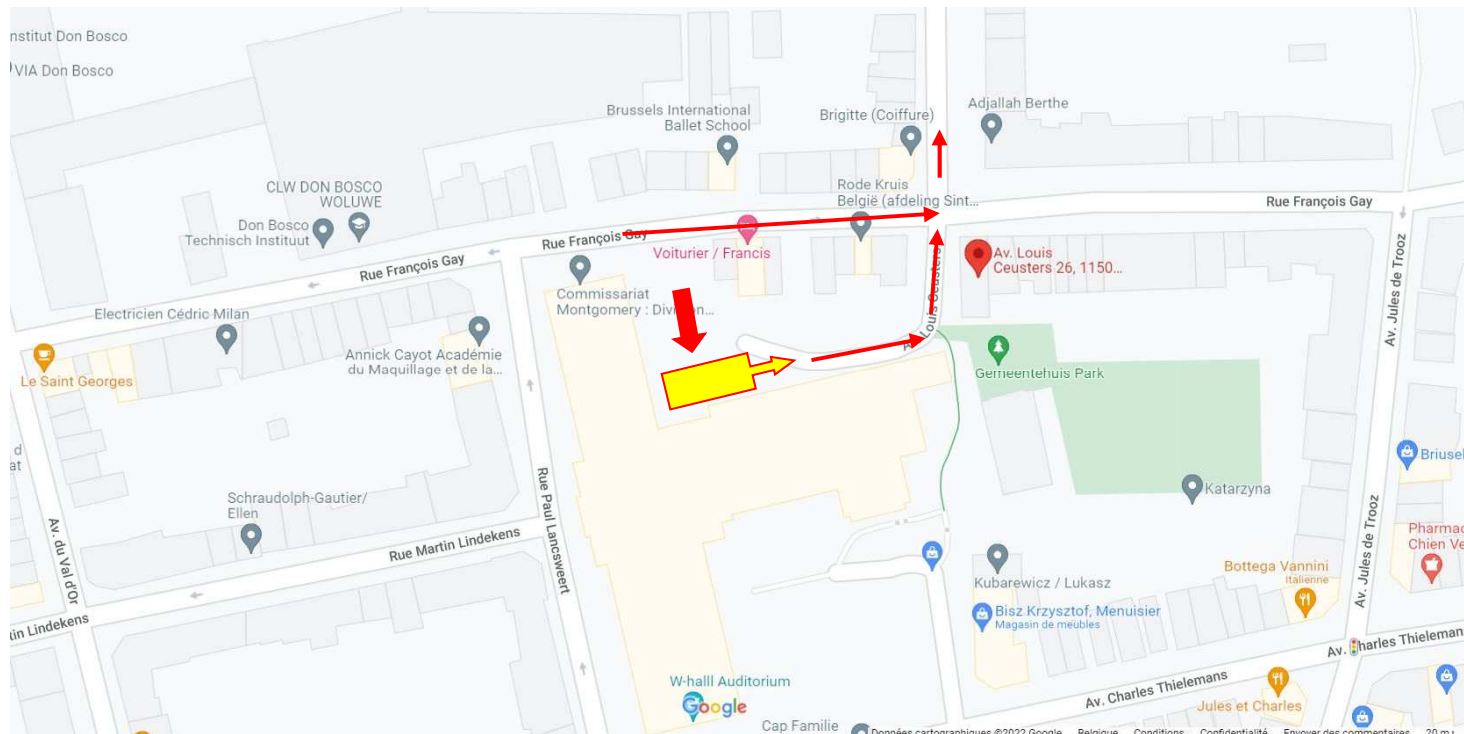
PARTERRE (466 places)

Dock and Artist Parking (1x truck & 3x car)

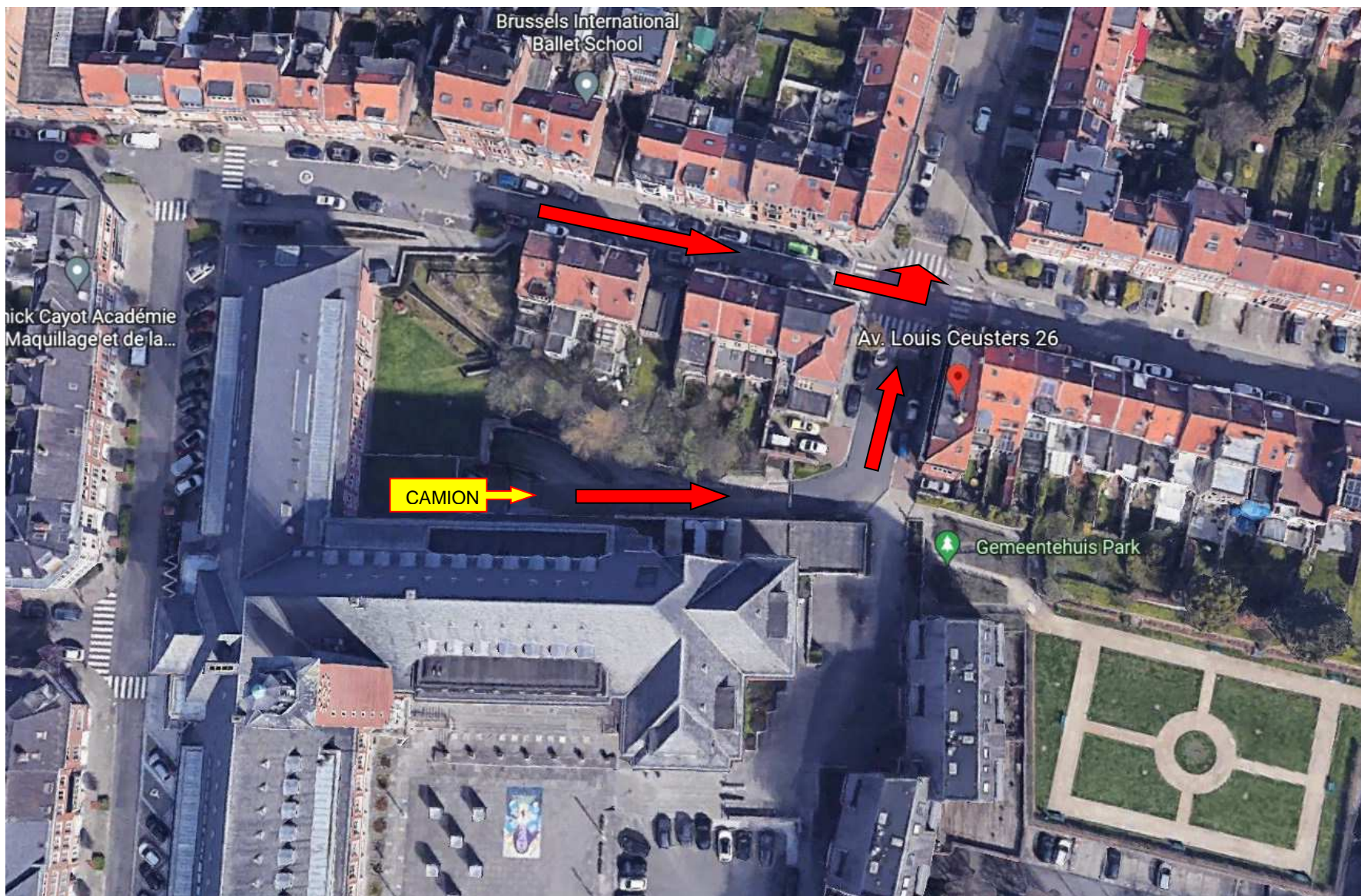
26 Avenue Louis Ceusters, 1150 Brussels – Belgium

(Ne pas sonner et continuer au bout du chemin)
(Niet aanbellen en doorlopen tot het einde van de straat)
(Do not ring the bell and continue to the end of the street)

**LEVER L'ESSIEU ARRIÈRE DU BUS EN BAS DE LA RAMPE D'ACCÈS AFIN DE NE PAS FROTTER LE TIMON DE LA REMORQUE SUR LE BÉTON
DE ACHTERAS VAN DE BUS ONDERAAN DE OPRIT OPHEFFEN ZODAT DE DISSEL VAN DE AANHANGWAGEN NIET OVER HET BETON SCHUURT
LIFT THE REAR AXLE OF THE BUS AT THE BOTTOM OF THE ACCESS RAMP SO AS NOT TO RUB THE DRAWBAR OF THE TRAILER ON THE CONCRETE**



**W:Hall / Centre Culturel & de Congrès de WSP ASBL
Avenue Ch. Thielemans, 93 - 1150 Bruxelles
RPM Région de BXL-Capitale - N° d'entreprise : 412.532.585**



W:Hall / Centre Culturel & de Congrès de WSP ASBL
Avenue Ch. Thielemans, 93 - 1150 Bruxelles
RPM Région de BXL-Capitale - N° d'entreprise : 412.532.585